

bloomin' verges

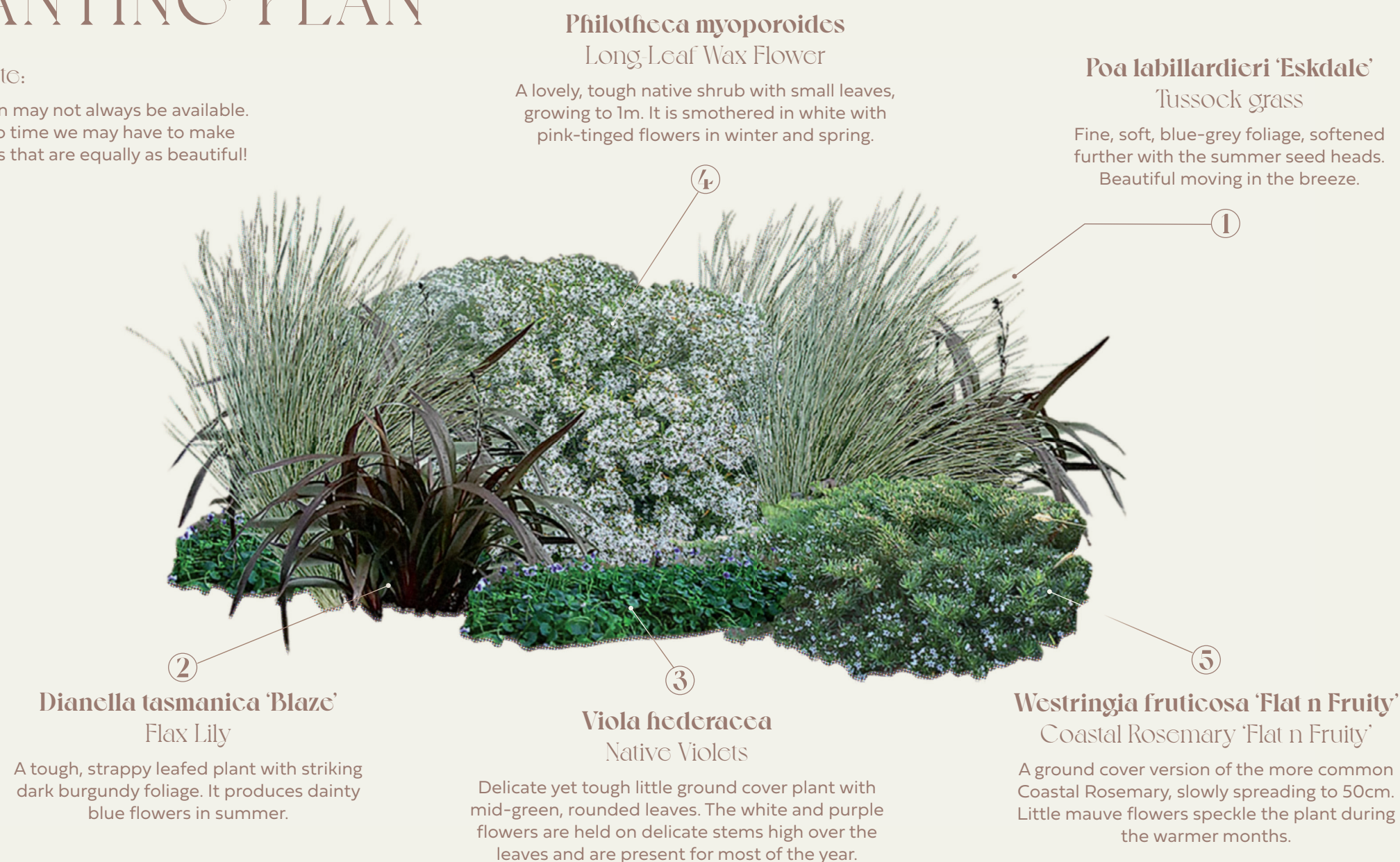
bloomin' verges is an initiative to help you plant a beautiful verge. In doing so, you are not just beautifying your home, street and neighbourhood; you are providing a habitat for insects and wildlife and improving the climate around your home, because green and growing space is cooler than bitumen, and the rain that falls is soaked up by the earth and the plants and doesn't just wash away. Nature will thank you, and research shows your mind and body will too!

HAPPY PLANTING!

PLANTING PLAN

Please note:

Plants shown may not always be available. From time to time we may have to make substitutions that are equally as beautiful!



You are the proud owner of your own **bloomin' verges**!

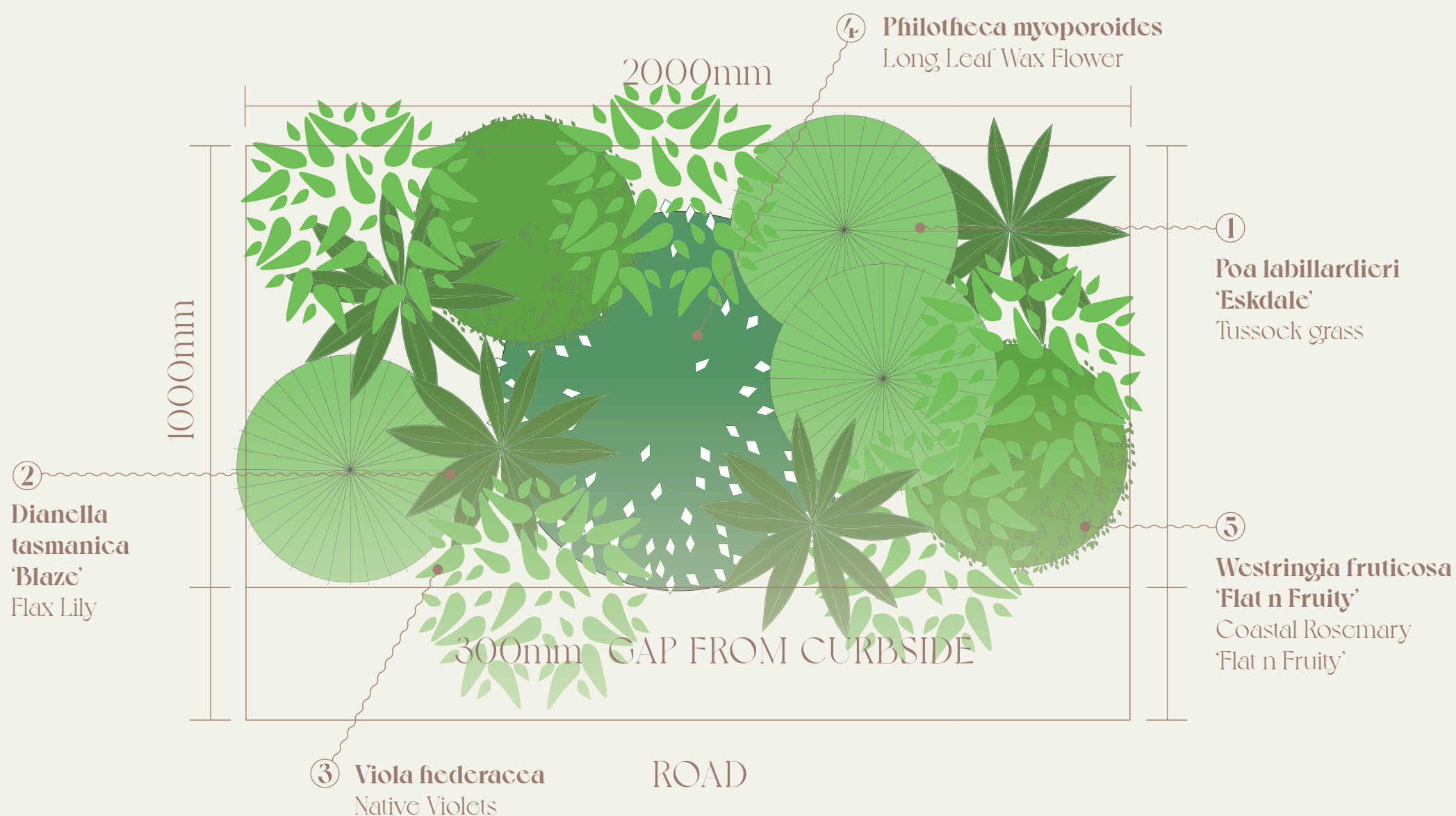
Everyone will love it! You will, your family will, your neighbours and community will – not to mention the birds and the bees.

KEEP IN TOUCH!

We can't wait to see what you do with your verges. Don't forget to post the fruits of your labour on Instagram.

Tag @landsberggardens and share your verges-ilante activities with the hashtag:

#**bloominverges**



Tips & Notes

How to prepare your verges, plant your plants and finish it off with mulch.

PREPARATION

- **Weeds!** Dig out all the weeds – make sure you get all the roots out and put all into the green bin. Note: We suggest you don't use chemicals and instead, get a good weeding trowel, tool or an old fork, and pull and dig them out. Leave no root behind!
- **Grass:** If you are taking up grass, this might take some patience and muscle. Treat the grass like the weeds in the point above.
- **Waste:** Put all garden waste into the green bin, or arrange a council pick up.
- **Soil Conditioning:** We recommend that you add a good amount of compost to refresh and revitalize the soil. We can deliver a bag or two with your plants if you wish.

PLANTING

- Dig a hole the same depth as your plant pot and a little wider. Gently tip the pot upside down with your free hand supporting the plant. Do this by capping the pot at soil level with your hand, with the stalk supported through your fingers (watch a YouTube video on planting!).
- Make sure that the soil level in the pot – where the stalk comes out of the soil and the roots begin under the surface level of the soil – is kept exactly the same as in the pot when the plant is planted in the ground.
- Firmly bring the soil back around the planted plant and firmly press down on the soil around the plant to make sure it is stable.

SET OUT

- Set your plants out following this plan – or use your creativity and set them out as you wish. If you are facing the sun, be careful to keep the tall ones at the back so everyone gets some! Or, if the light is even around the bed, position tall plants in the middle and array the smaller plants around them.
- Car access and set back. Measure off about 30cm from the curb and keep this area clear and out of your planting area. This area will allow people to get in and out of cars easily (without walking on your plants!).
- Your plants may look small! They will grow, so give them the space we have allocated to them on the plan.
- If you have a really long verges, make breaks in your planting to allow people to get from cars or the road across to the footpath (again to prevent them being walked on).

FINISHING

- **Mulch:** Spread a good, thick layer of Eucalyptus mulch around the planting – at least 10cm thick – but be careful not to submerge the stem of plant.
- **Watering:** Water in well and, water restrictions permitting, water every second day (unless it is raining). Do this until the plants are established – when they start shooting out new growth. You only need water again if it is very dry weather.

CHEW ON THIS!

- If you would like to add some edible plants to your verges, that's easy.
- Parsley and basil do well in shade. Simply interplant them with your other plants and see how they go!
- For more ideas, including Aussie bush tucker suggestions, visit our website:

bloominverges.com.au

MAKE IT YOUR OWN

COLOUR ME IN! ~~~~➔

bloomin' verges

We know that every inch of earth is full of life and wonderful potential. If treated well, it gives back generously – a bounty of beauty, sustenance, healing, habitat and pure delight.

It's time to transform your verge (and every verge!) into a garden that allows the earth to unleash all it has to offer. We're providing the plan, now you must take the action!

bloomin' verges is a gift for you and for the earth. It is also a call to action!

You will be rewarded with the joy that comes from watching your plants grow and

bloom, from knowing you are helping green our Earth – making a difference, one verge at a time.

So have fun! Get the kids involved, get your hands dirty, make it your own. Educate and spread the word – be the 'Street Seed' and germinate the idea across your community.

RESOURCES ~~~~

- Join your local Community Garden to ask for help, seek support, meet like-minded people and have some fun.
- Council Nurseries are a wonderful place to source plants and also advice. Find one on your council website.
- If you need clarification about planting on your verge, please contact your local council.

presented by

LANDSBERG
GARDEN DESIGN

+61 (0)2 9387 1155

barbara@landsberggardens.com.au
www.landsberggardens.com.au

~~~~ ABOUT US

- **bloomin' verges** is presented by Landsberg Garden Design. We're here to answer any questions and help in any way we can – just call or email us!
- We have a range of kits and planting plans for different soil and lighting conditions. Keep up with the latest news and special seasonal kits at our site:
www.bloominverges.com.au